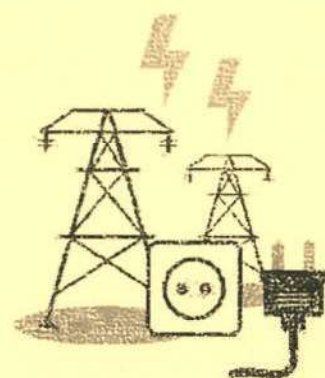


ภาคผนวก ฉ
หนังสือขึ้นทะเบียนห้องปฏิบัติการวิเคราะห์เอกชน
เลขทะเบียน ว-236





ที่ อก ๐๓๓๐(๑)/ ๙ ๙ ๙ ๖

กรมโรงงานอุตสาหกรรม
ถนนพระรามที่ ๖ แขวงทุ่งใหญ่ใต้
เขตราชเทวี กรุงเทพฯ ๑๐๔๐๐

๒ ๒ นิคุณาภ

๒๕๖๖

เรื่อง คอยช่วยเหลือรับขึ้นทะเบียนห้องปฏิบัติการวิเคราะห์เอกชน

เรียน กรรมการผู้จัดการ บริษัท เทคนิคส์แอนด์คอมไทย จำกัด

อ้างถึง คำขอขึ้นทะเบียน/ต่ออายุ/เปลี่ยนแปลงบุคลากร และขอใบตราส่งห้องปฏิบัติการวิเคราะห์เอกชน
ลงวันที่ ๓ มีนาคม ๒๕๖๖

สิ่งที่ส่งมาด้วย เอกสารแนบท้ายหนังสือคำขอขึ้นทะเบียนห้องปฏิบัติการวิเคราะห์เอกชน
บริษัท เทคนิคส์แอนด์คอมไทย จำกัด จำนวน ๒๔ แผ่น

ตามหนังสือที่อ้างถึง บริษัท เทคนิคส์แอนด์คอมไทย จำกัด ขอต่ออายุหนังสือรับขึ้นทะเบียน
ห้องปฏิบัติการวิเคราะห์เอกชน เลขทะเบียน ๖-๒๓๖-๙-๐๐๐๓ สดามที่ส่งเลขที่ ๑/๖ จออรานคำแหมง ๑๔๔ แยกสะพานสูง
เขตสะพานสูง กรุงเทพมหานคร ต่อกรมโรงงานอุตสาหกรรม เป็น

กรมโรงงานอุตสาหกรรมพิจารณาแล้ว ให้บริษัท เทคนิคส์แอนด์คอมไทย จำกัด ค่อยอายุหนังสือรับขึ้น
ทะเบียนห้องปฏิบัติการวิเคราะห์เอกชน โดยมีองค์ประกอบดังนี้

ก. ผู้ควบคุมดูแลห้องปฏิบัติการวิเคราะห์

- ๑) นายณัฐพงศ์ โคตรมา
- ๒) นางสาววราภรณ์ ประชุมแดง
- ๓) นางพรวิทย์ เพชรชัย
- ๔) นายสมชาย โปธารมณ
- ๕) นายประมวศ มูลสาร
- ๖) นายรัฐพล สุขดี

ข. เจ้าหน้าที่ประจำห้องปฏิบัติการวิเคราะห์

- ๑) นางสาวกมลีน อัครชัยศิริกรม
- ๒) นางสาวกมลทิพย์ ตีมงคล
- ๓) นางสาวกมลวรรณ เวียงประสิทธิ์ปโย
- ๔) นางสาวสุติพรพรณ ศรีสุวรรณ
- ๕) นางสาวอริยา วัฒนชาติ
- ๖) นางสาวมณีนี มณีรัตน์
- ๗) นางสาวพัชราพรพรณ ถ่วงมาพ
- ๘) นายสุริยะพงศ์ ยงสุพ
- ๙) นางสาวตติยากร สีนะห์
- ๑๐) นางสาวศิริพร กาจิต
- ๑๑) นายสุชาติ ศรีบุญ
- ๑๒) นายเกียรติศักดิ์ ทั่วส์

๑๓) นายจักรวัฒน์...

- ๒ -

- ๑๓) นายจักรวัฒน์ อิบาแซย์
- ๑๔) นางสาวนิยา เอ็นวัฒนา
- ๑๕) นางสาวรัฐญา สารแสง
- ๑๖) นายกิตติศักดิ์ เมืองงาม
- ๑๗) นายเกรียงศักดิ์ เพียรดีเกาะ
- ๑๘) นายเฉลิมวุฒิ พูลสงาม
- ๑๙) นางสาวนุศิรี อรชร
- ๒๐) นางสาววรรณศิริ สุริวงค์
- ๒๑) นายวิฑูรย์ วชิระรัตน์
- ๒๒) นางสาวกมลพร ขอยุณนิม
- ๒๓) นางสาวสุวิดาญา อยู่มี
- ๒๔) นางสาวณิชา ตรีไฉน
- ๒๕) นายเจษฎา คุ้มหา
- ๒๖) นายอรรถพล วงศ์สวัสดิ์
- ๒๗) นายประยัต จันท
- ๒๘) นายบุญพล กิตติภา
- ๒๙) นายพรพล บุคสา
- ๓๐) นายพัชร อยู่รัมย์
- ๓๑) นายณัฐโย ศรีรัตนาวาส

ค. ขอบข่ายผลการขึ้นทะเบียนให้วิเคราะห์ในน้ำเสีย น้ำใต้ดิน อากาศเสีย สิ่งปฏิกูลหรือ
วัสดุที่ไม่ใช้แล้ว และดิน ตามสิ่งส่งมาด้วย

หนังสือฉบับนี้จะหมดอายุในวันที่ ๑๓ มีนาคม ๒๕๖๙ หากประสงค์จะต่ออายุหนึ่งคือ
วันขึ้นทะเบียนห้องปฏิบัติการวิเคราะห์เอกชน ให้ยื่นคำขอต่ออายุพร้อมเอกสารประกอบคำขอต่อ
กรมโรงงานอุตสาหกรรม ภายใน ๓๐ วัน ก่อนวันเลิอายุของหนังสือขึ้นทะเบียนห้องปฏิบัติการวิเคราะห์เอกชน
 ทั้งนี้ สามารถยื่นคำขอผ่านระบบอิเล็กทรอนิกส์ได้ทั้งนำใบโปรดกรมโรงงานอุตสาหกรรม

จึงเรียนมาเพื่อทราบ

ขอแสดงความนับถือ
๙/๙ ๑๖/๙

✓ (นายประสม ศักดิ์พงษ์)
ผู้รักษาการรับผิดชอบเรื่องยื่นขอขึ้นทะเบียน
ผู้ตรวจการแผนผังเมืองและงานอุตสาหกรรม

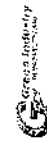
กองวิจัยและพัฒนายาสังเคราะห์โรงงาน

กรมมาตรฐานวิธีวิเคราะห์วิเคราะห์ทดสอบเภสัชภัณฑ์และทะเบียนห้องปฏิบัติการ

โทร. ๐ ๒๔๓๐ ๖๓๑๒ ต่อ ๒๑๐๓-๕

โทรสาร ๐ ๒๔๓๐ ๖๓๑๒ ต่อ ๒๑๔๔

ไปรษณีย์อิเล็กทรอนิกส์ รอสถา@pfr.mol.go.th



"อุตสาหกรรมก้าวหน้า ไปด้วยกัน" ร่วมกันพัฒนา อุตสาหกรรมไทย



เอกสารแนบท้ายหนังสือรับรองการขึ้นทะเบียนห้องปฏิบัติการวิเคราะห์เอกชน
บริษัท เทคโนโลยีสิ่งแวดล้อมไทย จำกัด
ที่ อก ๑๓๑๐(๑)/ ๙ ๘ ๙ ๖
ลงวันที่ ๒๒ มิถุนายน ๒๕๖๖
ขอบข่ายการวิเคราะห์ที่ได้รับขึ้นทะเบียนจากกรมโรงงานอุตสาหกรรม จำนวน ๓๓๗ รายการ
นับเสีย จำนวน 40 รายการ

ลำดับที่	สารมลพิษ	วิธีวิเคราะห์
1	Aldrin	Liquid-Liquid Extraction, Gas Chromatographic Method ^(a)
2	Arsenic	Digestion, Hydride Generation/Atomic Absorption Spectrometric Method ^(a)
3	Barium	1) Digestion, Direct Nitrous Oxide-Acetylene Flame Method ^(a) 2) Digestion, Electrothermal Atomic Absorption Spectrometric Method ^(a)
4	α-BHC	3) Digestion, Inductively Coupled Plasma Method ^(a)
5	γ-BHC	Liquid-Liquid Extraction, Gas Chromatographic Method ^(a)
6	Biochemical Oxygen Demand	Liquid-Liquid Extraction, Gas Chromatographic Method ^(a)
7	Cadmium	5-Day BOD Test, Azide Modification Method ^(a) 1) Digestion, Direct Air-Acetylene Flame Method ^(a) 2) Digestion, Electrothermal Atomic Absorption Spectrometric Method ^(a)
8	Chemical Oxygen Demand	3) Digestion, Inductively Coupled Plasma Method ^(a)
9	Chlordane	Closed Reflux, Titrimetric Method ^(a)
10	Chromium	Liquid-Liquid Extraction, Gas Chromatographic Method ^(a) 1) Digestion, Direct Air-Acetylene Flame Method ^(a) 2) Digestion, Electrothermal Atomic Absorption Spectrometric Method ^(a)
11	Color	3) Digestion, Inductively Coupled Plasma Method ^(a) ADM1 Weighted-Ordinate Spectrophotometric Method ^(a)
12	Copper	1) Digestion, Direct Air-Acetylene Flame Method ^(a) 2) Digestion, Electrothermal Atomic Absorption Spectrometric Method ^(a)
13	Cyanide	3) Digestion, Inductively Coupled Plasma Method ^(a)
14	4,4'-DDE	Distillation, Colorimetric Method ^(a)
15	4,4'-DDT	Liquid-Liquid Extraction, Gas Chromatographic Method ^(a)
16	Dieldrin	Liquid-Liquid Extraction, Gas Chromatographic Method ^(a)

17 Endosulfan I...

ลำดับที่	สารมลพิษ	วิธีวิเคราะห์
17	Endosulfan I	Liquid-Liquid Extraction, Gas Chromatographic Method ^(a)
18	Endosulfan II	Liquid-Liquid Extraction, Gas Chromatographic Method ^(a)
19	Endosulfan Sulfate	Liquid-Liquid Extraction, Gas Chromatographic Method ^(a)
20	Endrin	Liquid-Liquid Extraction, Gas Chromatographic Method ^(a)
21	Formaldehyde	Distillation, Colorimetric Method ^(a)
22	Free Chlorine	DPD Ferrous Titrimetric Method ^(a)
23	Heptachlor	Liquid-Liquid Extraction, Gas Chromatographic Method ^(a)
24	Heptachlor Epoxide	Liquid-Liquid Extraction, Gas Chromatographic Method ^(a)
25	Hexavalent Chromium	Colorimetric Method ^(a)
26	Lead	1) Digestion, Direct Air-Acetylene Flame Method ^(a) 2) Digestion, Electrothermal Atomic Absorption Spectrometric Method ^(a)
27	Manganese	3) Digestion, Inductively Coupled Plasma Method ^(a) 1) Digestion, Direct Air-Acetylene Flame Method ^(a) 2) Digestion, Electrothermal Atomic Absorption Spectrometric Method ^(a)
28	Mercury	3) Digestion, Inductively Coupled Plasma Method ^(a) Digestion, Cold-Vapor Atomic Absorption Spectrometric Method ^(a)
29	Nickel	1) Digestion, Direct Air-Acetylene Flame Method ^(a) 2) Digestion, Electrothermal Atomic Absorption Spectrometric Method ^(a)
30	Oil & Grease	3) Digestion, Inductively Coupled Plasma Method ^(a) 1) Liquid-Liquid, Partition-Gravimetric Method ^(a) 2) Soxhlet Extraction Method ^(a)
31	pH	Electrometric Method ^(a)
32	Phenols	Distillation, Direct Photometric Method ^(a)
33	Selenium	Digestion, Hydride Generation/Atomic Absorption Spectrometric Method ^(a)
34	Sulfide	1) Iodometric Method ^(a) 2) Methylene Blue Method ^(a)
35	Temperature	Laboratory and Field Methods ^(a)
36	Total Dissolved Solids	Dried at 180 °C ^(a)
37	Total Kjeldahl Nitrogen	Macro-Kjeldahl Method ^(a)
38	Total Suspended Solids	Dried at 103-105 °C ^(a)

39 Trivalent Chromium...

ลำดับที่	สารเคมี	วิธีวิเคราะห์
39	Trivalent Chromium	Digestion, Inductively Coupled Plasma Method; Colorimetric Method; Calculation ^(a)
40	Zinc	1) Digestion, Direct Air-Acetylene Flame Method ^(a) 2) Digestion, Electrothermal Atomic Absorption Spectrometric Method ^(a) 3) Digestion, Inductively Coupled Plasma Method ^(a)

น้ำดื่ม จำนวน 122 ชนิด

ลำดับที่	สารเคมี	วิธีวิเคราะห์
1	Acanaphthene	Liquid-Liquid Extraction, Gas Chromatographic/ Mass Spectrometric Method ^(a)
2	Acetone	Purge and Trap Gas Chromatographic/ Mass Spectrometric Method ^(a)
3	Aldrin	Liquid-Liquid Extraction, Gas Chromatographic Method ^(a)
4	Anthracene	Liquid-Liquid Extraction, Gas Chromatographic/ Mass Spectrometric Method ^(a)
5	Antimony	1) Digestion, Direct Air-Acetylene Flame Method ^(a) 2) Digestion, Electrothermal Atomic Absorption Spectrometric Method ^(a)
6	Arsenic	3) Digestion, Inductively Coupled Plasma Method ^(a) Digestion, Hydride Generation/Atomic Absorption Spectrometric Method ^(a)
7	Atrazine	Liquid-Liquid Extraction, Gas Chromatographic Method ^(a)
8	Barium	1) Digestion, Direct Nitrous Oxide-Acetylene Flame Method ^(a) 2) Digestion, Electrothermal Atomic Absorption Spectrometric Method ^(a)
9	Benz(a)anthracene	3) Digestion, Inductively Coupled Plasma Method ^(a) Liquid-Liquid Extraction, Gas Chromatographic/ Mass Spectrometric Method ^(a)
10	Benzene	Purge and Trap Gas Chromatographic/ Mass Spectrometric Method ^(a)
11	Benz(b)fluoranthene	Mass Spectrometric Method ^(a) Liquid-Liquid Extraction, Gas Chromatographic/ Mass Spectrometric Method ^(a)
12	Benz(k)fluoranthene	Mass Spectrometric Method ^(a) Liquid-Liquid Extraction, Gas Chromatographic/ Mass Spectrometric Method ^(a)

13 Benzoic acid...

ลำดับที่	สารเคมี	วิธีวิเคราะห์
13	Benzoic acid	Liquid-Liquid Extraction, Gas Chromatographic/ Mass Spectrometric Method ^(a)
14	Benzo(a)pyrene	Liquid-Liquid Extraction, Gas Chromatographic/ Mass Spectrometric Method ^(a)
15	Benzo(g,h,i)perylene	Liquid-Liquid Extraction, Gas Chromatographic/ Mass Spectrometric Method ^(a)
16	Beryllium	1) Digestion, Electrothermal Atomic Absorption Spectrometric Method ^(a) 2) Digestion, Inductively Coupled Plasma Method ^(a)
17	Bis(2-chloroethyl)ether	Liquid-Liquid Extraction, Gas Chromatographic/ Mass Spectrometric Method ^(a)
18	Bis(2-ethoxyethyl)phthalate	Liquid-Liquid Extraction, Gas Chromatographic/ Mass Spectrometric Method ^(a)
19	Bromodichloromethane	Purge and Trap Gas Chromatographic/ Mass Spectrometric Method ^(a)
20	Bromoform	Purge and Trap Gas Chromatographic/ Mass Spectrometric Method ^(a)
21	Butanol	Purge and Trap Gas Chromatographic/ Mass Spectrometric Method ^(a)
22	Butyl benzyl phthalate	Liquid-Liquid Extraction, Gas Chromatographic/ Mass Spectrometric Method ^(a)
23	Cadmium	1) Digestion, Electrothermal Atomic Absorption Spectrometric Method ^(a) 2) Digestion, Inductively Coupled Plasma Method ^(a)
24	Carbazole	Liquid-Liquid Extraction, Gas Chromatographic Method ^(a)
25	Carbon disulfide	Purge and Trap Gas Chromatographic/ Mass Spectrometric Method ^(a)
26	Carbon tetrachloride	Purge and Trap Gas Chromatographic/ Mass Spectrometric Method ^(a)
27	Chlordane	Liquid-Liquid Extraction, Gas Chromatographic Method ^(a)
28	p-Chloroaniline	Liquid-Liquid Extraction, Gas Chromatographic Method ^(a)
29	Chlorobenzene	Purge and Trap Gas Chromatographic/ Mass Spectrometric Method ^(a)
30	Chlorobromomethane	Purge and Trap Gas Chromatographic/ Mass Spectrometric Method ^(a)
31	Chloroform	Purge and Trap Gas Chromatographic/ Mass Spectrometric Method ^(a)

32 Chromium...

ลำดับที่	สารเคมี	วิธีวิเคราะห์
32	Chromium	1) Digestion, Direct Air-Acetylene Flame Method ^(a) 2) Digestion, Electrothermal Atomic Absorption Spectrometric Method ^(a) 3) Digestion, Inductively Coupled Plasma Method ^(a)
33	Chromium (III)	1) Digestion, Direct Air-Acetylene Flame Method; Colorimetric Method; Calculation ^(a) 2) Digestion, Electrothermal Atomic Absorption Spectrometric Method; Colorimetric Method; Calculation ^(a) 3) Digestion, Inductively Coupled Plasma Method; Colorimetric Method; Calculation ^(a)
34	Chromium (VI)	Colorimetric Method ^(a)
35	Chrysene	Liquid-Liquid Extraction, Gas Chromatographic/ Mass Spectrometric Method ^(a)
36	Cyanide	Distillation, Colorimetric Method ^(a)
37	2,4-D	Liquid-Liquid Extraction, Gas Chromatographic Method ^(a)
38	DDD	Liquid-Liquid Extraction, Gas Chromatographic Method ^(a)
39	DDE	Liquid-Liquid Extraction, Gas Chromatographic Method ^(a)
40	DDT	Liquid-Liquid Extraction, Gas Chromatographic Method ^(a)
41	Dibenz(a,h)anthracene	Liquid-Liquid Extraction, Gas Chromatographic/ Mass Spectrometric Method ^(a)
42	Di-n-butyl phthalate	Liquid-Liquid Extraction, Gas Chromatographic/ Mass Spectrometric Method ^(a)
43	1,2-Dichlorobenzene	Purge and Trap Gas Chromatographic/ Mass Spectrometric Method ^(a)
44	1,3-Dichlorobenzene	Purge and Trap Gas Chromatographic/ Mass Spectrometric Method ^(a)
45	1,4-Dichlorobenzene	Purge and Trap Gas Chromatographic/ Mass Spectrometric Method ^(a)
46	1,1-Dichloroethane	Purge and Trap Gas Chromatographic/ Mass Spectrometric Method ^(a)
47	1,2-Dichloroethane	Purge and Trap Gas Chromatographic/ Mass Spectrometric Method ^(a)
48	1,1-Dichloroethylene	Purge and Trap Gas Chromatographic/ Mass Spectrometric Method ^(a)
49	dis-1,2-Dichloroethylene	Purge and Trap Gas Chromatographic/ Mass Spectrometric Method ^(a)

50 trans-1,2-Dichloroethylene...

ลำดับที่	สารเคมี	วิธีวิเคราะห์
50	trans-1,2-Dichloroethylene	Purge and Trap Gas Chromatographic/ Mass Spectrometric Method ^(a)
51	1,2-Dichloropropane	Purge and Trap Gas Chromatographic/ Mass Spectrometric Method ^(a)
52	1,3-Dichloropropane	Purge and Trap Gas Chromatographic/ Mass Spectrometric Method ^(a)
53	1,3-Dichloropropene	Purge and Trap Gas Chromatographic/ Mass Spectrometric Method ^(a)
54	Dieldrin	Liquid-Liquid Extraction, Gas Chromatographic Method ^(a)
55	Diethyl phthalate	Liquid-Liquid Extraction, Gas Chromatographic/ Mass Spectrometric Method ^(a)
56	2,4-Dimethylphenol	Liquid-Liquid Extraction, Gas Chromatographic Method ^(a)
57	2,4-Dinitrophenol	Liquid-Liquid Extraction, Gas Chromatographic Method ^(a)
58	2,4-Dinitrotoluene	Liquid-Liquid Extraction, Gas Chromatographic Method ^(a)
59	2,6-Dinitrotoluene	Liquid-Liquid Extraction, Gas Chromatographic Method ^(a)
60	Di-n-Octyl phthalate	Liquid-Liquid Extraction, Gas Chromatographic/ Mass Spectrometric Method ^(a)
61	Endosulfan	Liquid-Liquid Extraction, Gas Chromatographic Method ^(a)
62	Endrin	Liquid-Liquid Extraction, Gas Chromatographic Method ^(a)
63	Ethylbenzene	Purge and Trap Gas Chromatographic/ Mass Spectrometric Method ^(a)
64	Fluoranthene	Liquid-Liquid Extraction, Gas Chromatographic/ Mass Spectrometric Method ^(a)
65	Fluorene	Liquid-Liquid Extraction, Gas Chromatographic/ Mass Spectrometric Method ^(a)
66	Heptachlor	Liquid-Liquid Extraction, Gas Chromatographic Method ^(a)
67	Heptachlor epoxide	Liquid-Liquid Extraction, Gas Chromatographic Method ^(a)
68	Hexachloro-1,3-butadiene	Purge and Trap Gas Chromatographic/ Mass Spectrometric Method ^(a)
69	n-Hexane	Purge and Trap Gas Chromatographic/ Mass Spectrometric Method ^(a)
70	α-HCH	Liquid-Liquid Extraction, Gas Chromatographic Method ^(a)
71	β-HCH	Liquid-Liquid Extraction, Gas Chromatographic Method ^(a)
72	γ-HCH	Liquid-Liquid Extraction, Gas Chromatographic Method ^(a)
73	Hexachlorocyclopentadiene	Liquid-Liquid Extraction, Gas Chromatographic/ Mass Spectrometric Method ^(a)

74 Hexachloroethane...

ลำดับที่	สารเคมี	วิธีวิเคราะห์
74	Hexachloroethane	Liquid-Liquid Extraction, Gas Chromatographic/ Mass Spectrometric Method ^(a)
75	Indeno(1,2,3-cd)pyrene	Liquid-Liquid Extraction, Gas Chromatographic/ Mass Spectrometric Method ^(a)
76	Isothorone	Liquid-Liquid Extraction, Gas Chromatographic/ Mass Spectrometric Method ^(a)
77	Lead	1) Digestion, Electrothermal Atomic Absorption Spectrometric Method ^(a) 2) Digestion, Inductively Coupled Plasma Method ^(a)
78	Manganese	1) Digestion, Direct Air-Acetylene Flame Method ^(a) 2) Digestion, Electrothermal Atomic Absorption Spectrometric Method ^(a) 3) Digestion, Inductively Coupled Plasma Method ^(a)
79	Mercury	Digestion, Cold-Vapor Atomic Absorption Spectrometric Method ^(a)
80	Methanol	Purge and Trap Gas Chromatographic/ Mass Spectrometric Method ^(a)
81	Methoxychlor	Liquid-Liquid Extraction, Gas Chromatographic Method ^(a)
82	Methyl bromide	Purge and Trap Gas Chromatographic/ Mass Spectrometric Method ^(a)
83	Methylene chloride	Purge and Trap Gas Chromatographic/ Mass Spectrometric Method ^(a)
84	2-Methylphenol	Liquid-Liquid Extraction, Gas Chromatographic/ Mass Spectrometric Method ^(a)
85	2-Methylnaphthalene	Liquid-Liquid Extraction, Gas Chromatographic/ Mass Spectrometric Method ^(a)
86	Methyl tert-butyl ether	Purge and Trap Gas Chromatographic/ Mass Spectrometric Method ^(a)
87	Naphthalene	Purge and Trap Gas Chromatographic/ Mass Spectrometric Method ^(a)
88	Nickel	1) Digestion, Electrothermal Atomic Absorption Spectrometric Method ^(a) 2) Digestion, Inductively Coupled Plasma Method ^(a)
89	Nitrobenzene	Liquid-Liquid Extraction, Gas Chromatographic/ Mass Spectrometric Method ^(a)
90	N-Nitrosodiphenylamine	Liquid-Liquid Extraction, Gas Chromatographic/ Mass Spectrometric Method ^(a)

91 N-Nitrosodi-n-propylamine...

ลำดับที่	สารเคมี	วิธีวิเคราะห์
91	N-Nitrosodi-n-propylamine	Liquid-Liquid Extraction, Gas Chromatographic/ Mass Spectrometric Method ^(a)
92	Polychlorinated Biphenyls PCB-1016 PCB-1221 PCB-1232 PCB-1242 PCB-1248 PCB-1254 PCB-1260	Liquid-Liquid Extraction, Gas Chromatographic Method ^(a) Electrometric Method ^(a) Liquid-Liquid Extraction, Gas Chromatographic/ Mass Spectrometric Method ^(a) 1) Distillation, Direct Photometric Method ^(a) 2) Liquid-Liquid Extraction, Gas Chromatographic Method ^(a)
93	Pentachlorophenol	Liquid-Liquid Extraction, Gas Chromatographic Method ^(a)
94	pH	Electrometric Method ^(a)
95	Phenanthrene	Liquid-Liquid Extraction, Gas Chromatographic/ Mass Spectrometric Method ^(a)
96	Phenol	1) Distillation, Direct Photometric Method ^(a) 2) Liquid-Liquid Extraction, Gas Chromatographic Method ^(a)
97	Pyrene	Liquid-Liquid Extraction, Gas Chromatographic/ Mass Spectrometric Method ^(a)
98	Selenium	Digestion, Hydride Generation/Atomic Absorption Spectrometric Method ^(a)
99	Silver	1) Digestion, Direct Air-Acetylene Flame Method ^(a) 2) Digestion, Electrothermal Atomic Absorption Spectrometric Method ^(a) 3) Digestion, Inductively Coupled Plasma Method ^(a)
100	Styrene	Purge and Trap Gas Chromatographic/ Mass Spectrometric Method ^(a)
101	1,1,2,2-Tetrachloroethane	Purge and Trap Gas Chromatographic/ Mass Spectrometric Method ^(a)
102	Tetrachloroethylene	Purge and Trap Gas Chromatographic/ Mass Spectrometric Method ^(a)
103	Toluene	Purge and Trap Gas Chromatographic/ Mass Spectrometric Method ^(a)
104	Toxaphene	Liquid-Liquid Extraction, Gas Chromatographic Method ^(a)
105	TPH (C ₅ -C ₄)	Purge and Trap, Gas Chromatographic/ Mass Spectrometric Method ^(a)

106 TPH (C₅-C₁₀)...

ลำดับที่	สารเคมี	วิธีการตรวจ
106	TPH (C ₈ , C ₁₀)	Separatory Funnel Liquid-Liquid Extraction, Gas Chromatographic Method ^{(a)(22)}
107	TPH (C ₈ , C ₁₀ , C ₁₂)	Separatory Funnel Liquid-Liquid Extraction, Gas Chromatographic Method ^{(a)(22)}
108	1,2,4-Trichlorobenzene	Purge and Trap Gas Chromatographic/ Mass Spectrometric Method ^(a)
109	1,1,1-Trichloroethane	Purge and Trap Gas Chromatographic/ Mass Spectrometric Method ^(a)
110	1,1,2-Trichloroethane	Purge and Trap Gas Chromatographic/ Mass Spectrometric Method ^(a)
111	Trichloroethylene	Purge and Trap Gas Chromatographic/ Mass Spectrometric Method ^(a)
112	2,4,5-Trichlorophenol	Liquid-Liquid Extraction, Gas Chromatographic Method ^(a)
113	2,4,6-Trichlorophenol	Liquid-Liquid Extraction, Gas Chromatographic Method ^(a)
114	1,3,5-Trimethylbenzene	Purge and Trap Gas Chromatographic/ Mass Spectrometric Method ^(a)
115	Vanadium	1) Digestion, Electrothermal Atomic Absorption Spectrometric Method ^(a) 2) Digestion, Inductively Coupled Plasma Method ^(a)
116	Vinyl acetate	Purge and Trap Gas Chromatographic/ Mass Spectrometric Method ^(a)
117	Vinyl chloride	Purge and Trap Gas Chromatographic/ Mass Spectrometric Method ^(a)
118	m-Xylene	Purge and Trap Gas Chromatographic/ Mass Spectrometric Method ^(a)
119	o-Xylene	Purge and Trap Gas Chromatographic/ Mass Spectrometric Method ^(a)
120	p-Xylene	Purge and Trap Gas Chromatographic/ Mass Spectrometric Method ^(a)
121	Xylene (Total)	Purge and Trap Gas Chromatographic/ Mass Spectrometric Method ^(a)
122	Zinc	1) Digestion, Direct Air-Acetylene Flame Method ^(a) 2) Digestion, Inductively Coupled Plasma Method ^(a)

หมายเหตุ...

ตารางรายชื่อ (ต่อตาราง) จำนวน 18 ชนิด

ลำดับที่	สารเคมี	วิธีการตรวจ
1	Antimony	1) Isokinetic Sampling, Digestion, Inductively Coupled Plasma Method ^(a) 2) Isokinetic Sampling, Digestion, Direct Air-Acetylene Flame Method ^(a) 3) Isokinetic Sampling, Digestion, Graphite Furnace Atomic Absorption Spectrometric Method ^(a) Isokinetic Sampling, Digestion, Hydride Generation/Atomic Absorption Spectrometric Method ^(a) Instrumental Analyzer Method ^(a) Absorption Sampling, Ion Chromatographic Method ^(a) Absorption Sampling, Digestion, Inductively Coupled Plasma Method ^(a) 1) Isokinetic Sampling, Digestion, Direct Air-Acetylene Flame Method ^(a) 2) Isokinetic Sampling, Digestion, Direct Air-Acetylene Flame Method ^(a) Adsorption Sampling, Gas Chromatographic Method ^(a) Isokinetic Sampling, Analysis by ISO/IEC 17025 Accredited Laboratory or Analysis by Department of Industrial Works Registered Laboratory (Dioxins/Furans Analysis Approved) ^(a) Absorption Sampling, Ion Chromatographic Method ^(a) Absorption Sampling, Ion Chromatographic Method ^(a) Absorption Sampling, Iodometric Method ^(a) 1) Isokinetic Sampling, Digestion, Inductively Coupled Plasma Method ^(a) 2) Isokinetic Sampling, Digestion, Direct Air-Acetylene Flame Method ^(a) 3) Isokinetic Sampling, Digestion, Graphite Furnace Atomic Absorption Spectrometric Method ^(a) Isokinetic Sampling, Digestion, Cold-Vapor Atomic Absorption Spectrometric Method ^(a) Ringelmann's Method ^(a) 1) Absorption Sampling, Phenoldisulfonic acid Method ^(a) 2) Instrumental Analyzer Method ^(a)
2	Arsenic	
3	Carbon monoxide	
4	Chlorine	
5	Copper	
6	Cresol	
7	Dioxins/Furans	
8	Hydrogen Chloride	
9	Hydrogen Fluoride	
10	Hydrogen Sulfide	
11	Lead	
12	Mercury	
13	Opacity	
14	Oxides of Nitrogen	

15 Sulfur dioxide...

ลำดับที่	สารเคมี	วิธีวิเคราะห์
15	Sulfur dioxide	1) Absorption Sampling, Barium-Thoron Titrimetric Method ^[2] 2) Instrumental Analyzer Method ^[3]
16	Sulfuric acid	Isokinetic Sampling, Barium-Thoron Titrimetric Method ^[4]
17	Total Suspended Particulate	Isokinetic Sampling, Gravimetric Method ^[5]
18	Xylene	Absorption Sampling, Gas Chromatographic Method ^[6]

สิ่งปฏิกูลหรือวัสดุที่ไม่ได้ใช้แล้ว จำนวน 36 ขยะรวม

ลำดับที่	สารเคมี	วิธีวิเคราะห์
1	Alum	1) Waste Extraction, Solid-Phase Extraction, Gas Chromatographic Method ^[1,2,4] 2) Solid-Phase Extraction, Gas Chromatographic Method ^[1,2,4] 3) Soxhlet Extraction, Gas Chromatographic Method ^[1,2,4]
2	Antimony	1) Waste Extraction, Digestion, Flame Atomic Absorption Spectrometric Method ^[1,4,13] 2) Waste Extraction, Digestion, Graphite Furnace Atomic Absorption Spectrometric Method ^[1,4,13] 3) Waste Extraction, Digestion, Inductively Coupled Plasma Method ^[1,4,14]
3	Arsenic	4) Digestion, Flame Atomic Absorption Spectrometric Method ^[7,13] 5) Digestion, Graphite Furnace Atomic Absorption Spectrometric Method ^[7,13] 6) Digestion, Inductively Coupled Plasma Method ^[7,14] 1) Waste Extraction, Digestion, Hydride Generation/Atomic Absorption Spectrometric Method ^[1,4,17] 2) Digestion, Hydride Generation/Atomic Absorption Spectrometric Method ^[7,17]
4	Barium	1) Waste Extraction, Digestion, Flame Atomic Absorption Spectrometric Method ^[1,4,13] 2) Waste Extraction, Digestion, Graphite Furnace Atomic Absorption Spectrometric Method ^[1,4,13] 3) Waste Extraction, Digestion, Inductively Coupled Plasma Method ^[1,4,13]

4) Digestion...

ลำดับที่	สารเคมี	วิธีวิเคราะห์
5	Beryllium	4) Digestion, Flame Atomic Absorption Spectrometric Method ^[7,13] 5) Digestion, Graphite Furnace Atomic Absorption Spectrometric Method ^[7,13] 6) Digestion, Inductively Coupled Plasma Method ^[7,14] 1) Waste Extraction, Digestion, Flame Atomic Absorption Spectrometric Method ^[1,4,13] 2) Waste Extraction, Digestion, Graphite Furnace Atomic Absorption Spectrometric Method ^[1,4,13] 3) Waste Extraction, Digestion, Inductively Coupled Plasma Method ^[1,4,14]
6	Cadmium	4) Digestion, Flame Atomic Absorption Spectrometric Method ^[7,13] 5) Digestion, Graphite Furnace Atomic Absorption Spectrometric Method ^[7,13] 6) Digestion, Inductively Coupled Plasma Method ^[7,14] 1) Waste Extraction, Digestion, Flame Atomic Absorption Spectrometric Method ^[1,4,13] 2) Waste Extraction, Digestion, Graphite Furnace Atomic Absorption Spectrometric Method ^[1,4,13] 3) Waste Extraction, Digestion, Inductively Coupled Plasma Method ^[1,4,14]
7	Chlordane	4) Digestion, Flame Atomic Absorption Spectrometric Method ^[7,13] 5) Digestion, Graphite Furnace Atomic Absorption Spectrometric Method ^[7,13] 6) Digestion, Inductively Coupled Plasma Method ^[7,14] 1) Waste Extraction, Solid-Phase Extraction, Gas Chromatographic Method ^[1,2,4] 2) Solid-Phase Extraction, Gas Chromatographic Method ^[1,2,4] 3) Soxhlet Extraction, Gas Chromatographic Method ^[1,2,4]
8	Chromium	1) Waste Extraction, Digestion, Flame Atomic Absorption Spectrometric Method ^[1,4,13] 2) Waste Extraction, Digestion, Graphite Furnace Atomic Absorption Spectrometric Method ^[1,4,13] 3) Waste Extraction, Digestion, Inductively Coupled Plasma Method ^[1,4,13]

3) Waste Extraction...

ลำดับที่	สารเคมี	วิธีการตรวจ
9	Chromium (III)	3) Waste Extraction, Digestion, Inductively Coupled Plasma Method ^(1,14) 4) Digestion, Flame Atomic Absorption Spectrometric Method ^(1,15) 5) Digestion, Graphite Furnace Atomic Absorption Spectrometric Method ^(1,16) 6) Digestion, Inductively Coupled Plasma Method ^(7,10) 1) Waste Extraction, Digestion, Flame Atomic Absorption Spectrometric Method; Waste Extraction, Colorimetric Method; Calculation ^(1,1,13,18) 2) Waste Extraction, Digestion, Graphite Furnace Atomic Absorption Spectrometric Method; Waste Extraction, Colorimetric Method; Calculation ^(1,1,13,18) 3) Waste Extraction, Digestion, Inductively Coupled Plasma Method; Waste Extraction, Colorimetric Method; Calculation ^(1,1,13,18) 4) Digestion, Flame Atomic Absorption Spectrometric Method; Alkaline Digestion, Colorimetric Method; Calculation ^(7,8,13,18) 5) Digestion, Graphite Furnace Atomic Absorption Spectrometric Method; Alkaline Digestion, Colorimetric Method; Calculation ^(7,8,13,18) 6) Digestion, Inductively Coupled Plasma Method; Alkaline Digestion, Colorimetric Method; Calculation ^(7,8,13,18)
10	Chromium (VI)	1) Waste Extraction, Colorimetric Method ^(1,14) 2) Alkaline Digestion, Colorimetric Method ^(1,14)
11	Cobalt	1) Waste Extraction, Digestion, Flame Atomic Absorption Spectrometric Method ^(1,15) 2) Waste Extraction, Digestion, Graphite Furnace Atomic Absorption Spectrometric Method ^(1,16) 3) Waste Extraction, Digestion, Inductively Coupled Plasma Method ^(1,14) 4) Digestion, Flame Atomic Absorption Spectrometric Method ^(7,10) 5) Digestion, Graphite Furnace Atomic Absorption Spectrometric Method ^(7,10) 6) Digestion, Inductively Coupled Plasma Method ^(7,10)

12 Copper...

ลำดับที่	สารเคมี	วิธีการตรวจ
12	Copper	1) Waste Extraction, Digestion, Flame Atomic Absorption Spectrometric Method ^(1,14) 2) Waste Extraction, Digestion, Graphite Furnace Atomic Absorption Spectrometric Method ^(1,16) 3) Waste Extraction, Digestion, Inductively Coupled Plasma Method ^(1,14) 4) Digestion, Flame Atomic Absorption Spectrometric Method ^(7,10) 5) Digestion, Graphite Furnace Atomic Absorption Spectrometric Method ^(7,10) 6) Digestion, Inductively Coupled Plasma Method ^(7,10) 1) Waste Extraction, Separatory Funnel Liquid-Liquid Extraction, Gas Chromatographic Method ^(1,12,20) 2) Soxhlet Extraction, Gas Chromatographic Method ^(1,20) 1) Waste Extraction, Solid-Phase Extraction, Gas Chromatographic Method ^(1,10,20) 2) Solid-Phase Extraction, Gas Chromatographic Method ^(10,20) 3) Soxhlet Extraction, Gas Chromatographic Method ^(11,20) 1) Waste Extraction, Solid-Phase Extraction, Gas Chromatographic Method ^(1,10,20) 2) Solid-Phase Extraction, Gas Chromatographic Method ^(10,20) 3) Soxhlet Extraction, Gas Chromatographic Method ^(11,20) 1) Waste Extraction, Solid-Phase Extraction, Gas Chromatographic Method ^(1,10,20) 2) Solid-Phase Extraction, Gas Chromatographic Method ^(10,20) 3) Soxhlet Extraction, Gas Chromatographic Method ^(11,20)
13	2,4-D	
14	DDD	
15	DDE	
16	DDT	
17	Dieldrin	

18 Endrin...

ลำดับที่	สารเคมี	วิธีตรวจห้
18	Endrin	1) Waste Extraction, Solid-Phase Extraction, Gas Chromatographic Method ^(1,10,20) 2) Solid-Phase Extraction, Gas Chromatographic Method ^(1,10,24) 3) Soxhlet Extraction, Gas Chromatographic Method ^(1,1,24)
19	Heptachlor	1) Waste Extraction, Solid-Phase Extraction, Gas Chromatographic Method ^(1,10,20) 2) Solid-Phase Extraction, Gas Chromatographic Method ^(10,24) 3) Soxhlet Extraction, Gas Chromatographic Method ^(1,1,24)
20	Lead	1) Waste Extraction, Digestion, Flame Atomic Absorption Spectrometric Method ^(1,6,15) 2) Waste Extraction, Digestion, Graphite Furnace Atomic Absorption Spectrometric Method ^(1,6,16) 3) Waste Extraction, Digestion, Inductively Coupled Plasma Method ^(1,6,14) 4) Digestion, Flame Atomic Absorption Spectrometric Method ^(7,15) 5) Digestion, Graphite Furnace Atomic Absorption Spectrometric Method ^(7,16) 6) Digestion, Inductively Coupled Plasma Method ^(7,14)
21	Lindane	1) Waste Extraction, Solid-Phase Extraction, Gas Chromatographic Method ^(1,10,20) 2) Solid-Phase Extraction, Gas Chromatographic Method ^(10,24) 3) Soxhlet Extraction, Gas Chromatographic Method ^(1,1,24)
22	Mercury	1) Waste Extraction, Digestion, Cold-Vapor Atomic Absorption Spectrometric Method ^(1,6,19) 2) Digestion, Cold-Vapor Atomic Absorption Spectrometric Method ⁽¹⁰⁾
23	Methoxychlor	1) Waste Extraction, Solid-Phase Extraction, Gas Chromatographic Method ^(1,10,20) 2) Solid-Phase Extraction, Gas Chromatographic Method ^(10,24)

3) Soxhlet...

ลำดับที่	สารเคมี	วิธีตรวจห้
24	Mirex	3) Soxhlet Extraction, Gas Chromatographic Method ^(1,20) 1) Waste Extraction, Separatory Funnel Liquid-Liquid Extraction, Gas Chromatographic Method ^(1,20) 2) Soxhlet Extraction, Gas Chromatographic Method ^(1,20)
25	Molybdenum	1) Waste Extraction, Digestion, Flame Atomic Absorption Spectrometric Method ^(1,6,19) 2) Waste Extraction, Digestion, Graphite Furnace Atomic Absorption Spectrometric Method ^(1,6,16) 3) Waste Extraction, Digestion, Inductively Coupled Plasma Method ^(1,6,14) 4) Digestion, Flame Atomic Absorption Spectrometric Method ^(7,15) 5) Digestion, Graphite Furnace Atomic Absorption Spectrometric Method ^(7,16) 6) Digestion, Inductively Coupled Plasma Method ^(7,14)
26	Nickel	1) Waste Extraction, Digestion, Flame Atomic Absorption Spectrometric Method ^(1,6,15) 2) Waste Extraction, Digestion, Graphite Furnace Atomic Absorption Spectrometric Method ^(1,6,16) 3) Waste Extraction, Digestion, Inductively Coupled Plasma Method ^(1,6,14) 4) Digestion, Flame Atomic Absorption Spectrometric Method ^(7,15) 5) Digestion, Graphite Furnace Atomic Absorption Spectrometric Method ^(7,16) 6) Digestion, Inductively Coupled Plasma Method ^(7,14)
27	Polychlorinated Biphenyls Aroclor 1016 Aroclor 1221 Aroclor 1232 Aroclor 1242 Aroclor 1248 Aroclor 1254 Aroclor 1260 2,4,4'-Trichlorobiphenyl 2,2',5,5'-Tetrachlorobiphenyl	1) Waste Extraction, Separatory Funnel Liquid-Liquid Extraction, Gas Chromatographic Method ^(1,20) 2) Waste Extraction, Solid-Phase Extraction, Gas Chromatographic Method ^(1,10,20) 3) Soxhlet Extraction, Gas Chromatographic Method ^(1,1,20)

2,2',4,4',5,5'...

ปิ่น จำนวน 121 ชนิด

ลำดับที่	สารเคมี	วิธีการตรวจ
1	Acenaphthene	Soxhlet Extraction, Gas Chromatographic/ Mass Spectrometric Method(11.27)
2	Acetone	Purge and Trap, Gas Chromatographic/ Mass Spectrometric Method(12.24)
3	Aldrin	Soxhlet Extraction, Gas Chromatographic Method(11.24)
4	Anthracene	Soxhlet Extraction, Gas Chromatographic/ Mass Spectrometric Method(11.27)
5	Antimony	1) Digestion, Flame Atomic Absorption Spectrometric Method(7.19) 2) Digestion, Graphite Furnace Atomic Absorption Spectrometric Method(7.14)
6	Arsenic	3) Digestion, Inductively Coupled Plasma Method(7.14) Digestion, Hydride Generation/Atomic Absorption Spectrometric Method(7.17)
7	Atrazine	Soxhlet Extraction, Gas Chromatographic Method(11.24)
8	Barium	1) Digestion, Flame Atomic Absorption Spectrometric Method(7.15)
9	Benz(a)anthracene	2) Digestion, Graphite Furnace Atomic Absorption Spectrometric Method(7.14) 3) Digestion, Inductively Coupled Plasma Method(7.14)
10	Benzene	Soxhlet Extraction, Gas Chromatographic/ Mass Spectrometric Method(11.27)
11	Benzo(b)fluoranthene	Purge and Trap, Gas Chromatographic/ Mass Spectrometric Method(12.24)
12	Benzo(k)fluoranthene	Soxhlet Extraction, Gas Chromatographic/ Mass Spectrometric Method(11.27)
13	Benzoic acid	Soxhlet Extraction, Gas Chromatographic Method(11.24)
14	Benzo(a)pyrene	Soxhlet Extraction, Gas Chromatographic/ Mass Spectrometric Method(11.27)
15	Benzo(g,h,i)perylene	Soxhlet Extraction, Gas Chromatographic/ Mass Spectrometric Method(11.27)
16	Beryllium	1) Digestion, Flame Atomic Absorption Spectrometric Method(7.13)

SPM

2) Digestion...

วิธีการตรวจ

ลำดับที่	สารเคมี	วิธีการตรวจ
17	Bis(2-chloroethyl)ether	2) Digestion, Graphite Furnace Atomic Absorption Spectrometric Method(7.14)
18	Bis(2-ethylhexyl)phthalate	3) Digestion, Inductively Coupled Plasma Method(7.14) Soxhlet Extraction, Gas Chromatographic/ Mass Spectrometric Method(11.27)
19	Bromodichloromethane	Soxhlet Extraction, Gas Chromatographic/ Mass Spectrometric Method(11.27)
20	Bromoform	Purge and Trap, Gas Chromatographic/ Mass Spectrometric Method(12.24)
21	Butanol	Purge and Trap, Gas Chromatographic/ Mass Spectrometric Method(12.24)
22	Butyl benzyl phthalate	Soxhlet Extraction, Gas Chromatographic/ Mass Spectrometric Method(11.27)
23	Cadmium	1) Digestion, Flame Atomic Absorption Spectrometric Method(7.15) 2) Digestion, Graphite Furnace Atomic Absorption Spectrometric Method(7.14) 3) Digestion, Inductively Coupled Plasma Method(7.14)
24	Carbazole	Soxhlet Extraction, Gas Chromatographic/ Mass Spectrometric Method(11.27)
25	Carbon disulfide	Purge and Trap, Gas Chromatographic/ Mass Spectrometric Method(12.24)
26	Carbon tetrachloride	Purge and Trap, Gas Chromatographic/ Mass Spectrometric Method(12.24)
27	Chlordane	Soxhlet Extraction, Gas Chromatographic Method(11.24)
28	p-Chloroaniline	Soxhlet Extraction, Gas Chromatographic/ Mass Spectrometric Method(11.27)
29	Chlorobenzene	Purge and Trap, Gas Chromatographic/ Mass Spectrometric Method(12.24)
30	Chlorodibromomethane	Purge and Trap, Gas Chromatographic/ Mass Spectrometric Method(12.24)
31	Chloroform	Purge and Trap, Gas Chromatographic/ Mass Spectrometric Method(12.24)
32	Chromium	1) Digestion, Flame Atomic Absorption Spectrometric Method(7.15)

SPM

2) Digestion...

ลำดับที่	สารเคมี	วิธีวิเคราะห์
33	Chromium (III)	2) Digestion, Graphite Furnace Atomic Absorption Spectrometric Method ^(1.14) 3) Digestion, Inductively Coupled Plasma Method ^(1.10) 1) Digestion, Flame Atomic Absorption Spectrometric Method; Alkaline Digestion, Colorimetric Method; Calculation ^(7.8,15,30) 2) Digestion, Graphite Furnace Atomic Absorption Spectrometric Method; Alkaline Digestion, Colorimetric Method; Calculation ^(7.8,16,18) 3) Digestion, Inductively Coupled Plasma Method; Alkaline Digestion, Colorimetric Method; Calculation ^(7.8,14,19)
34	Chromium (VI)	Alkaline Digestion, Colorimetric Method ^(8.18)
35	Chrysene	Soxhlet Extraction, Gas Chromatographic/ Mass Spectrometric Method ^(11.27)
36	Cyanide	1) Extraction, Distillation, Titrimetric Method ^(28.29,30) 2) Extraction, Distillation, Colorimetric Method ^(28.29,30)
37	2,4-D	Soxhlet Extraction, Gas Chromatographic Method ^(11.24)
38	DDD	Soxhlet Extraction, Gas Chromatographic Method ^(11.29)
39	DDE	Soxhlet Extraction, Gas Chromatographic Method ^(11.29)
40	DIT	Soxhlet Extraction, Gas Chromatographic Method ^(11.29)
41	Dibenz(a,h)anthracene	Soxhlet Extraction, Gas Chromatographic/ Mass Spectrometric Method ^(11.27)
42	Di-n-butyl phthalate	Soxhlet Extraction, Gas Chromatographic/ Mass Spectrometric Method ^(11.27)
43	1,2-Dichlorobenzene	Purge and Trap, Gas Chromatographic/ Mass Spectrometric Method ^(13.26)
44	1,3-Dichlorobenzene	Purge and Trap, Gas Chromatographic/ Mass Spectrometric Method ^(13.26)
45	1,4-Dichlorobenzene	Purge and Trap, Gas Chromatographic/ Mass Spectrometric Method ^(13.26)
46	1,1-Dichloroethane	Purge and Trap, Gas Chromatographic/ Mass Spectrometric Method ^(13.26)
47	1,2-Dichloroethane	Purge and Trap, Gas Chromatographic/ Mass Spectrometric Method ^(13.26)
48	1,1-Dichloroethylene	Purge and Trap, Gas Chromatographic/ Mass Spectrometric Method ^(13.26)


49 cis-1,2-Dichloroethylene...

ลำดับที่	สารเคมี	วิธีวิเคราะห์
49	cis-1,2-Dichloroethylene	Purge and Trap, Gas Chromatographic/ Mass Spectrometric Method ^(13.26)
50	trans-1,2-Dichloroethylene	Purge and Trap, Gas Chromatographic/ Mass Spectrometric Method ^(13.26)
51	1,2-Dichloropropane	Purge and Trap, Gas Chromatographic/ Mass Spectrometric Method ^(13.26)
52	1,3-Dichloropropane	Purge and Trap, Gas Chromatographic/ Mass Spectrometric Method ^(13.26)
53	1,3-Dichloropropene	Purge and Trap, Gas Chromatographic/ Mass Spectrometric Method ^(13.26)
54	Dieldrin	Soxhlet Extraction, Gas Chromatographic Method ^(11.29)
55	Diethyl phthalate	Soxhlet Extraction, Gas Chromatographic/ Mass Spectrometric Method ^(11.27)
56	2,4-Dimethylphenol	Soxhlet Extraction, Gas Chromatographic Method ^(11.29)
57	2,4-Dinitrophenol	Soxhlet Extraction, Gas Chromatographic Method ^(11.23)
58	2,4-Dinitrotoluene	Soxhlet Extraction, Gas Chromatographic Method ^(11.23)
59	2,6-Dinitrotoluene	Soxhlet Extraction, Gas Chromatographic Method ^(11.23)
60	Di-n-Octyl phthalate	Soxhlet Extraction, Gas Chromatographic/ Mass Spectrometric Method ^(11.27)
61	Endosulfan	Soxhlet Extraction, Gas Chromatographic Method ^(11.29)
62	Endrin	Soxhlet Extraction, Gas Chromatographic Method ^(11.29)
63	Ethylbenzene	Purge and Trap, Gas Chromatographic/ Mass Spectrometric Method ^(13.26)
64	Fluoranthene	Soxhlet Extraction, Gas Chromatographic/ Mass Spectrometric Method ^(11.27)
65	Fluorene	Soxhlet Extraction, Gas Chromatographic/ Mass Spectrometric Method ^(11.27)
66	Heptachlor	Soxhlet Extraction, Gas Chromatographic Method ^(11.29)
67	Heptachlor epoxide	Soxhlet Extraction, Gas Chromatographic Method ^(11.29)
68	Hexachloro-1,3-butadiene	Purge and Trap, Gas Chromatographic/ Mass Spectrometric Method ^(13.26)
69	n-Hexane	Purge and Trap, Gas Chromatographic/ Mass Spectrometric Method ^(13.26)
70	α-HCH	Soxhlet Extraction, Gas Chromatographic Method ^(11.24)
71	β-HCH	Soxhlet Extraction, Gas Chromatographic Method ^(11.24)
72	γ-HCH	Soxhlet Extraction, Gas Chromatographic Method ^(11.24)

73 Hexachlorocyclopentadiene...

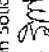
ลำดับที่	สารเคมี	วิธีวิเคราะห์
73	Hexachlorocyclopentadiene	Soxhlet Extraction, Gas Chromatographic/ Mass Spectrometric Method ^(1,2)
74	Hexachloroethane	Soxhlet Extraction, Gas Chromatographic/ Mass Spectrometric Method ^(1,2)
75	Indeno(1,2,3-cd)pyrene	Soxhlet Extraction, Gas Chromatographic/ Mass Spectrometric Method ^(1,2)
76	Isophorone	Soxhlet Extraction, Gas Chromatographic/ Mass Spectrometric Method ^(1,2)
77	Lead	1) Digestion, Flame Atomic Absorption Spectrometric Method ^(7,15) 2) Digestion, Graphite Furnace Atomic Absorption Spectrometric Method ^(7,16) 3) Digestion, Inductively Coupled Plasma Method ^(7,14)
78	Manganese	1) Digestion, Flame Atomic Absorption Spectrometric Method ^(7,15) 2) Digestion, Graphite Furnace Atomic Absorption Spectrometric Method ^(7,16) 3) Digestion, Inductively Coupled Plasma Method ^(7,14)
79	Mercury	Digestion, Cold-Vapor Atomic Absorption Spectrometric Method ⁽²³⁾
80	Methanol	Purge and Trap, Gas Chromatographic/ Mass Spectrometric Method ^(1,23)
81	Methoxychlor	Soxhlet Extraction, Gas Chromatographic Method ^(1,20)
82	Methyl bromide	Purge and Trap, Gas Chromatographic/ Mass Spectrometric Method ^(3,23)
83	Methylene chloride	Purge and Trap, Gas Chromatographic/ Mass Spectrometric Method ^(1,23)
84	2-Methylphenol	Soxhlet Extraction, Gas Chromatographic Method ^(1,23)
85	2-Methylnaphthalene	Soxhlet Extraction, Gas Chromatographic/ Mass Spectrometric Method ^(1,23)
86	Methyl tert-butyl ether	Purge and Trap, Gas Chromatographic/ Mass Spectrometric Method ^(3,23)
87	Naphthalene	Purge and Trap, Gas Chromatographic/ Mass Spectrometric Method ^(3,23)
88	Nickel	1) Digestion, Flame Atomic Absorption Spectrometric Method ^(7,15) 2) Digestion, Graphite Furnace Atomic Absorption Spectrometric Method ^(7,16) 3) Digestion, Inductively Coupled Plasma Method ^(7,14)

ลำดับที่	สารเคมี	วิธีวิเคราะห์
89	Nitrobenzene	Soxhlet Extraction, Gas Chromatographic/ Mass Spectrometric Method ^(1,27)
90	N-Nitrosodiphenylamine	Soxhlet Extraction, Gas Chromatographic/ Mass Spectrometric Method ^(1,27)
91	N-Nitrosodi-n-propylamine	Soxhlet Extraction, Gas Chromatographic/ Mass Spectrometric Method ^(1,27)
92	Polychlorinated Biphenyls Aroclor 1016 Aroclor 1221 Aroclor 1232 Aroclor 1242 Aroclor 1248 Aroclor 1254 Aroclor 1260	Soxhlet Extraction, Gas Chromatographic Method ^(1,27)
93	2,2',4,5,5'-Tetrachlorobiphenyl	Soxhlet Extraction, Gas Chromatographic Method ^(1,24)
94	2,2',3,4,4',5'- Hexachlorobiphenyl	Soxhlet Extraction, Gas Chromatographic/ Mass Spectrometric Method ^(1,27)
95	2,2',4,4',5,5'- Hexachlorobiphenyl	Soxhlet Extraction, Gas Chromatographic/ Mass Spectrometric Method ^(1,27)
96	2,2',3,4,4',5,5'- Heptachlorobiphenyl	Soxhlet Extraction, Gas Chromatographic/ Mass Spectrometric Method ^(1,27)
97	Pentachlorophenol Phenanthrene	Digestion, Hydride Generation/Atomic Absorption Spectrometric Method ^(2,21)
98	Selenium Silver	1) Digestion, Flame Atomic Absorption Spectrometric Method ^(7,15) 2) Digestion, Graphite Furnace Atomic Absorption Spectrometric Method ^(7,16)
99	Styrene	3) Digestion, Inductively Coupled Plasma Method ^(7,14) Purge and Trap, Gas Chromatographic/ Mass Spectrometric Method ^(3,23)

ลำดับที่	สารมลพิษ	วิธีวิเคราะห์
100	1,1,2,2-Tetrachloroethane	Purge and Trap, Gas Chromatographic/ Mass Spectrometric Method ^(13.28)
101	Tetrachloroethylene	Purge and Trap, Gas Chromatographic/ Mass Spectrometric Method ^(13.28)
102	Toluene	Purge and Trap, Gas Chromatographic/ Mass Spectrometric Method ^(13.28)
103	Toxaphene	Soxhlet Extraction, Gas Chromatographic Method ^(11.24)
104	TPH (C ₅ -C ₈)	Purge and Trap, Gas Chromatographic/ Mass Spectrometric Method ^(13.28)
105	TPH (C ₉ -C ₁₀)	Soxhlet Extraction, Gas Chromatographic Method ^(11.23)
106	TPH (C ₁₀ -C ₁₅)	Soxhlet Extraction, Gas Chromatographic Method ^(11.24)
107	1,2,4-Trichlorobenzene	Purge and Trap, Gas Chromatographic/ Mass Spectrometric Method ^(13.28)
108	1,1,1-Trichloroethane	Purge and Trap, Gas Chromatographic/ Mass Spectrometric Method ^(13.28)
109	1,1,2-Trichloroethane	Purge and Trap, Gas Chromatographic/ Mass Spectrometric Method ^(13.28)
110	Trichloroethylene	Purge and Trap, Gas Chromatographic/ Mass Spectrometric Method ^(13.28)
111	2,4,5-Trichlorophenol	Soxhlet Extraction, Gas Chromatographic Method ^(11.23)
112	2,4,6-Trichlorophenol	Soxhlet Extraction, Gas Chromatographic Method ^(11.23)
113	1,3,5-Trimethylbenzene	Purge and Trap, Gas Chromatographic/ Mass Spectrometric Method ^(13.28)
114	Vanadium	1) Digestion, Flame Atomic Absorption Spectrometric Method ^(7.13) 2) Digestion, Graphite Furnace Atomic Absorption Spectrometric Method ^(7.10) 3) Digestion, Inductively Coupled Plasma Method ^(7.4)
115	Vinyl acetate	Purge and Trap, Gas Chromatographic/ Mass Spectrometric Method ^(13.28)
116	Vinyl chloride	Purge and Trap, Gas Chromatographic/ Mass Spectrometric Method ^(13.28)
117	m-Xylene	Purge and Trap, Gas Chromatographic/ Mass Spectrometric Method ^(13.28)
118	o-Xylene	Purge and Trap, Gas Chromatographic/ Mass Spectrometric Method ^(13.28)
119	p-Xylene	Purge and Trap, Gas Chromatographic/ Mass Spectrometric Method ^(13.28)
120 Xylene (Total)		

ลำดับที่	สารมลพิษ	วิธีวิเคราะห์
120	Xylene (Total)	Purge and Trap, Gas Chromatographic/ Mass Spectrometric Method ^(13.28)
121	Zinc	1) Digestion, Flame Atomic Absorption Spectrometric Method ^(7.13) 2) Digestion, Graphite Furnace Atomic Absorption Spectrometric Method ^(7.14) 3) Digestion, Inductively Coupled Plasma Method ^(7.19)

เอกสารอ้างอิง

- กระทรวงอุตสาหกรรม. ประกาศกระทรวงอุตสาหกรรม, พ.ศ. 2548. เรื่อง การกักตุนสิ่งปฏิกูลหรือวัสดุที่ไม่ได้เสีย. ราชกิจจานุเบกษา. 25 มกราคม 2549. เล่มที่ 123 ตอนพิเศษ 114.
- กระทรวงอุตสาหกรรม. ประกาศกระทรวงอุตสาหกรรม, พ.ศ. 2549. เรื่อง กำหนดค่าปริมาณเข้มข้นที่เจือปนในอากาศที่ระคายเคืองจากปล่องของหม้อไอน์โรงสีข้าวที่ใช้ถ่านหินเป็นเชื้อเพลิง. ราชกิจจานุเบกษา. 4 ธันวาคม 2549. เล่มที่ 123 ตอนพิเศษ 1254.
- สมาคมวิศวกรเคมีสิ่งแวดล้อมแห่งประเทศไทย. คู่มือวิเคราะห์น้ำเสีย. พิมพ์ครั้งที่ 4. กรุงเทพฯ: เรือนแก้วการพิมพ์, 2547.
- APHA, AWWA, WEF. Standard Methods for the Examination of Water and Wastewater. 23rd ed. Washington, DC: APHA, 2017.
- United States Environmental Protection Agency. Standards of Performance for New Stationary Sources. 40 CFR 60. Appendix A, 2022.
- United States Environmental Protection Agency. Test Methods for Evaluation Solid Waste Physical/Chemical Methods. SW-846, 1997.
- United States Environmental Protection Agency. Test Methods for Evaluation Solid Waste Physical/Chemical Methods. Acid Digestion of Sludges and Sediments and Soils. SW-846 Method 3050B, 1996.
- United States Environmental Protection Agency. Test Methods for Evaluation Solid Waste Physical/Chemical Methods. Alkaline Digestion for Hexavalent Chromium. SW-846 Method 3060A, 1996.
- United States Environmental Protection Agency. Test Methods for Evaluation Solid Waste Physical/Chemical Methods. Separatory Funnel Liquid-Liquid Extraction. SW-846 Method 3510C, 1996.
- United States Environmental Protection Agency. Test Methods for Evaluation Solid Waste Physical/Chemical Methods. Solid Phase Extraction. SW-846 Method 3535A, 2007.
- United States Environmental Protection Agency. Test Methods for Evaluation Solid Waste Physical/Chemical Methods. Soxhlet Extraction. SW-846 Method 3540C, 1996. 

12. United States Environmental Protection Agency. Test Methods for Evaluation Solid Waste Physical/Chemical Methods. Purge-and-Trap for Aqueous Samples. SW-846 Method 5030C, 2003.
13. United States Environmental Protection Agency. Test Methods for Evaluation Solid Waste Physical/Chemical Methods. Closed-System Purge-and-Trap and Extraction for Volatile Organics in Soil and Waste Samples. SW-846 Method 5035A, 2007.
14. United States Environmental Protection Agency. Test Methods for Evaluation Solid Waste Physical/Chemical Methods. Inductively Coupled Plasma-Optical Emission Spectrometry. SW-846 Method 6010D, 2018.
15. United States Environmental Protection Agency. Test Methods for Evaluation Solid Waste Physical/Chemical Methods. Flame Atomic Absorption Spectrophotometry. SW-846 Method 7000B, 2007.
16. United States Environmental Protection Agency. Test Methods for Evaluation Solid Waste Physical/Chemical Methods. Graphite Furnace Atomic Absorption Spectrophotometry. SW-846 Method 7010, 2007.
17. United States Environmental Protection Agency. Test Methods for Evaluation Solid Waste Physical/Chemical Methods. Arsenic (Atomic Absorption, Gaseous Hydride). SW-846 Method 7061A, 1992.
18. United States Environmental Protection Agency. Test Methods for Evaluation Solid Waste Physical/Chemical Methods. Chromium, Hexavalent (Colorimetric). SW-846 Method 7196A, 1992.
19. United States Environmental Protection Agency. Test Methods for Evaluation Solid Waste Physical/Chemical Methods. Mercury in Liquid Waste (Manual, Cold-Vapor Technique). SW-846 Method 7470A, 1994.
20. United States Environmental Protection Agency. Test Methods for Evaluation Solid Waste Physical/Chemical Methods. Mercury in Solid or Semisolid Waste (Manual Cold-Vapor Technique). SW-846 Method 7471A, 1994.
21. United States Environmental Protection Agency. Test Methods for Evaluation Solid Waste Physical/Chemical Methods. Selenium (Atomic Absorption, Borohydride Reduction). SW-846 Method 7742, 1994.
22. United States Environmental Protection Agency. Test Methods for Evaluation Solid Waste Physical/Chemical Methods. Nonhalogenated Organics Using GC/FID. SW-846 Method 8015D, 2003.
23. United States Environmental Protection Agency. Test Methods for Evaluation Solid Waste Physical/Chemical Methods. Phenols by Gas Chromatography. SW-846 Method 8041, 1996.
24. United States...

24. United States Environmental Protection Agency. Test Methods for Evaluation Solid Waste Physical/Chemical Methods. Organochlorine Pesticides by Gas Chromatography. SW-846 Method 8081B, 2007.
25. United States Environmental Protection Agency. Test Methods for Evaluation Solid Waste Physical/Chemical Methods. Polychlorinated Biphenyls (PCBs) by Gas Chromatography. SW-846 Method 8082A, 2007.
26. United States Environmental Protection Agency. Test Methods for Evaluation Solid Waste Physical/Chemical Methods. Volatile Organic Compounds by Gas Chromatography/Mass Spectrometry (GC/MS). SW-846 Method 8260C, 2006.
27. United States Environmental Protection Agency. Test Methods for Evaluation Solid Waste Physical/Chemical Methods. Semivolatile Organic Compounds by Gas Chromatography/Mass Spectrometry. SW-846 Method 8270D, 2014.
28. United States Environmental Protection Agency. Test Methods for Evaluation Solid Waste Physical/Chemical Methods. Total and Amenable Cyanide: Distillation. SW-846 Method 9010C, 2004.
29. United States Environmental Protection Agency. Test Methods for Evaluation Solid Waste Physical/Chemical Methods. Cyanide Extraction Procedure for Solids and Oil. SW-846 Method 9013A, 1996.
30. United States Environmental Protection Agency. Test Methods for Evaluation Solid Waste Physical/Chemical Methods. Cyanide in Waters and Extracts Using Titrimetric and Manual Spectrophotometric Procedures. SW-846 Method 9014, 2014. *SM*